



SEPTEMBER 2010 NEWSLETTER

Welcome to the September Newsletter and the start of another exciting season. We start this newsletter with a review of some of the events that took place during our summer break:

PAST EVENTS

EXHIBITION AT OXTED HEALTH CENTRE

" TPS held a photography exhibition in the Oxted Health centre waiting room from July 17th to 31st. Thank you to all those of you who contributed pictures. The senior partner, Dr Richard Spiller sent me a little note thanking me for the show - described as very nice. He said that at least 1000 people saw it"

Yours, *John N.*

OUT AND ABOUT AT ST KATHARINE'S DOCK

"On Mon August 23rd, which started as a terrible rainy day, seven of us met at St Katharine's Dock. We met Zoe (from the dock's management company), who was very obliging, and after I had signed a two page disclaimer document, with no fewer than fifteen clauses, we were let loose on the dock. The weather was very windy during the afternoon, so I needed a tripod. I was challenged by security men several times, but they were quite happy when I explained our permission. We had a cup of tea there, then continued and had an early supper followed by more filming in twilight, by which time the wind had died down. It was quite difficult to tear one's self away. After we left, there were some stunning shots of and from Tower bridge. Altogether it was a very successful day, far more so that you would have thought at 7.00 AM.

Our next outing will be on Saturday October 9th - please put in your diary. I have ideas, but have not decided where we will go yet",

John N.

SUMMER MEETINGS

Thursday 26th August saw the last of our four Summer meetings. All four had reasonable attendance, but there was plenty of room for more members and friends to join us. Unfortunately, 'summer' was a misnomer, and it was a little too cold to enjoy the pubs gardens on all but one of the evenings - but we didn't let that spoil our night.

SUMMER WORKSHOPS

Saturday 28th August saw the last of our three Summer Workshops. It was a little difficult to squeeze the presentations into the two hour workshops, but we hope all the attendees gained some benefit from them. Our thanks to the presenters and all the members who helped with the logistics.

There were lots of useful tips given out, eg. from John Howard: The two Video tutorial podcasts I can recommend to subscribe to are:

- 1: Photoshop for Digital Photographers (website www.tdpconnection.com)
- 2: Davrodigital. (website www.davrodigital.co.uk)

You can download the podcasts direct from the websites or via iTunes.

GODSTONE FAIR

TPS were again at the Godstone Fair on August Bank Holiday Monday, where we were showing a selection of members prints. This year we had a large marquee all to ourselves. So we were able to put on a very large display. Fortunately, the weather was fine and our display attracted a large number of visitors.

Thanks to Alan G, Brian S, Caroline F, John H, Marcus S-T, Nick W, Paul K and Paul S who set-up, manned and packed away and all the members who lent their prints.

INVITATION

The Art of Photography: From Plate Camera to Computer is a RPS Exhibition to be held at the **Robert Phillips Gallery, Riverhouse Barn, Walton on Thames** from **6th to 24th October 2010**. See the last page of the newsletter for the full details.

TPS have an **Invitation**, for one member to attend the **Official Opening on Saturday 9th October** from 12 Noon to 2pm. **Mrs Rosemary Wilman HonFRPS**, the Royal Photographic Society's President will be opening the Exhibition.

If you would like to go to the opening please drop Steve E an email: tps-se@hotmail.com

Also, if you would like a **group visit to this exhibition**, to be followed by a photo outing?, again drop me an email at the above address, and I will try and find a convenient date.

FUJIFILM'S SENSIA RANGE DISCONTINUED

Fujifilm Professional has announced that the Fujifilm Corporation in Japan is to cease manufacture of the **Fujichrome Sensia slide film range with immediate effect**. It is anticipated the UK holds sufficient stocks of most speeds of Sensia to satisfy demand until December 2010.

Fujifilm's Product Manager for Professional Film, Gabriel Da Costa explains the move: "Due to increasing production costs and decreasing demand globally, all Fujichrome Sensia film (100, 200 & 400 ISO) has been discontinued. Our laboratory in Leeds will continue to process and mount Fujichrome Sensia film until all stocks are depleted, including all rolls previously sold and awaiting processing."

While the loss of Sensia will be a blow to fans of film photography, Fujifilm will continue to manufacture a range of other colour reversal films, as Da Costa says: "Fujichrome Provia or Fujichrome Velvia are both ready-made replacements for Sensia and both these ranges are readily available. Customers can continue to have their professional film processed and mounted using our Fujifilm E6 Processing Vouchers available from the laboratory itself. We have no plans to close our Leeds processing operation and we will continue to support E6, C41, B&W and RA4 services for our customers."

To contact the Fujifilm Processing Lab, go to www.fujifilmprocessinglaboratory.co.uk or call 0113 244 8221.

DIARY DATES

RPS DIGITAL IMAGING GROUP THAMES VALLEY - SUNDAY, 26th SEPTEMBER

MIKE MCNAMEE BSc FRPS FBPPA **"THE DEVIL IS IN THE DETAIL: Techniques for preparing images that win"**

RPS DIGTV welcome Mike on his second visit to the Thames Valley Centre. On this occasion, Mike asks "what makes a winner?". A really good idea is a fine start! Beyond that, though, you have to give the judge as few reasons to knock points off as you possibly can. Feed 'em only scraps! Now the devil really is in the detail - colour balance, sharpening, borders, perfect masking - all go towards leaving the judge with nothing to pick on. If the judge likes your print, and cannot find a single fault with it, there is only one outcome - you're a winner! Mike's day will be truly hands on, you the audience are going to be the judges, the plaintiff and the accused. You are going to have to adjust colour, make sharpening adjustments, and possibly have your test prints analysed. During the day, Mike will cover the following topics: RAW file adjustments, sharpening, fine tuning output, making borders, printing (an Epson 3880 will be available), soft proofing (both colour and monochrome output), and methods of assessing and viewing print.

For more details on Mike's presentation, about Mike himself, and to find out how to download an optional test image, please go to www.rpsdig-thamesvalley.org.uk/Pages/programme.html.

Based on the attendance and success of Mike's previous visit to the Centre, you may wish to book your place at this meeting. Season ticket holders are automatically booked but it would help if Season Ticket holders can inform us if they are NOT coming. If you do not have a season ticket, you may book via the booking page www.rpsdig-thamesvalley.org.uk/Pages/booking.html on our web site.

Cost: £8.00 for non-members of the RPS Digital Imaging Group.

Location: Coopers Hill Community Centre, Crowthorne Road North, Bagshot Road, Bracknell, Berkshire RG12 7QS

Doors open: 10 am for 10.30 and free refreshments will be available. Don't forget your pack lunch.

Further information at www.rpsdig-thamesvalley.org.uk

NATURAL WORLD PHOTOGRAPHIC SOCIETY

Natural World Photographic Society will be hosting **David Plummer** who will be giving a presentation on the **MAMMALS OF THE MASAI MARA**. This will take place on **28th October at 8pm**. NWPS welcomes non-club members to join them and see the excellent work of David Plummer. For those of you who may not have heard of David you can visit his website to see examples of his work: www.davidplummerimages.co.uk.

The NWPS meet at the **Crawley Club 24 Brighton Road, Crawley Sussex RH10 6AA** see: (<http://tinyurl.com/3y3rc35>) for a map. The club is fully licensed and has its own free and spacious car park. Crawley bus and train stations are a few minutes walk away

See the NWPS website: www.nwps.co.uk for more details.

EXTERNAL COMPETITIONS

SHREWSBURY OPEN EXHIBITION - LAST CHANCE FOR SLIDES

The Shrewsbury Open Photography Exhibition is BPE and PAGB approved.

Entries are capped at approx. 2000 so late entries may be returned.

The **Closing date is 25th September 2010** so you need to enter as soon as possible.

The exhibition has three categories; Open Slide, Open Digital and Nature Digital.

This is the last year they will be offering slide entries – next year will be PDI only – so please get your slides sent in now!

Full details and entry from: www.shropshire-photographic.org.uk

THE 20TH GUERNSEY SALON

The move last year to a digital salon has meant many changes but it encouraged a large volume of entries and they are hopeful of another successful year.

There are four classes for judge, Ann Miles to select from - Mono Open, Mono Portrait, Colour Open and Colour Portrait.

The closing date is 23rd October 2010. Full details and entry from: www.guernseysalon.co.uk

6TH SWANSEA CITY EXHIBITION OF INTERNATIONAL PHOTOGRAPHY

"This year, to keep the entry fee low, we are only accepting digital entries but we are still offering a comprehensive Salon Catalogue for each entrant. There will be four sections. Open Colour, Open Mono, Travel, Nature, and a new section People specially set up to allow more Open section acceptances and awards. If all sections are entered with 4 images the fee is less than £1 per image. Payment will be via Paypal. If online upload of images is not available to you then CD entries will be accepted with an additional cost as indicated in our fees. We are approved by both FIAP and PSA and all acceptances will count towards their distinctions. Results will be available for use in any application for distinctions at the end of 2010". **Closing date is 21st October 2010.**

Details and Entry Form at: www.swanseacameraclub.co.uk/international/sccinternational

OUT AND ABOUT

Advance Notice: October will see the start of the **BRIGHTON PHOTO BIENNIAL 2010** and the corresponding **BRIGHTON PHOTO FRINGE**. There are too many events to list separately, but all the details can be found on their respective websites:

BRIGHTON PHOTO BIENNIAL 2010: www.bpb.org.uk/programme

BRIGHTON PHOTO FRINGE: www.photofringe.org

Maybe a good opportunity for a group outing to the seaside???

THE HAWTH, CRAWLEY

Address: **Hawth Avenue, Crawley, RH10 6YZ.**

Dates: **Monday 30th August to Saturday 11th September**

Open: **Monday to Saturday 10am - 8pm**

Cost: **Admission free**

Web: www.hawth.co.uk

STEVE MCDONALD

'Steve's passion for photography has taken him all over the world to capture the essence of locations and he hopes excite and inspire a shared enthusiasm for the natural beauty of the world we live in.'

THE HAWTH, CRAWLEY

Address: **Hawth Avenue, Crawley, RH10 6YZ.**

Dates: **Monday 13th to Friday 24th September**

Open: **Monday to Saturday 10am - 8pm**

Cost: **Admission free**

Web: www.hawth.co.uk

CRAWLEY CAMERA CLUB'S ANNUAL EXHIBITION

The annual exhibition of CCC (www.crawleycameraclub.co.uk) member's work, produced by member's of all ages and experience.

CHEQUER MEAD ARTS CENTRE, EAST GRINSTEAD

Address: **Chequer Mead Arts Centre, De La Warr Road, East Grinstead, RH19 3BS**

Dates: **Thursday, 9th September to mid-day, Wednesday, 15th September**

Open: **Monday to Saturday 9am - 5pm**

Cost: **Admission free**

Web: www.chequermead.org.uk

EAST GRINSTEAD CAMERA CLUB'S EXHIBITION

East Grinstead Camera Club (www.egcc.org.uk) extend a welcome to members of all SPA clubs to attend their exhibition which will be held at, from.

NATIONAL PORTRAIT GALLERY

Address: **Studio Gallery & Main Hall, St Martin's Place, London WC2H 0HE.**

Dates: **See below**

Open: **Daily 10am - 6pm Thurs & Fri open until 9pm**

Cost: **Admission free**

Web: www.npg.org.uk

CAMILLE SILVY

The **Camille Silvy** Exhibition (Cost £5) continues – see July Newsletter for details

GLASTONBURY

This Exhibition of prints by **Venetia Dearden** continues **until 26th Sept.** in the **Bookshop Galley.**

AN ENGLISHMAN IN NEW YORK

This Exhibition of photographs by Jason Bell continues until ??? in Room 38a. And whilst there it is also worth looking at the **BP PORTRAIT AWARD 2010** – until 19th September.

NATIONAL THEATRE

Address: **Olivier / Lyttelton Exhibition Space, South Bank, London SE1 9PX**. Tel: 020 7452 3400

Dates: See below.

Open: **Mon - Sat 9.30am – 11pm and Sun 12pm - 6pm** (when there is a performance in the building)

Cost: **Admission free**

Web: www.nationaltheatre.org.uk

THE PRESS PHOTOGRAPHER'S YEAR 2010 continues until **19th September** in the Lyttelton Exhibition Space. And,

A LONDON BESTIARY from **23rd September to 31st October**

Four sea-lions entwine themselves against a red brick wall, a plasterwork bat props up an empty pediment, while Landseer's famous lions guard Nelson's column. London displays a veritable menagerie of animals: some attached to famous landmarks, others perched in all but invisible gravity-defying positions, with many testifying to the heraldic symbolism that adorns our civic spaces. Photographer Ianthe Ruthven has beautifully captured the creatures of the city in an exhibition that pays tribute to the imagination and humour of generations of architects and sculptors. Some may be familiar, others completely unknown. How many of these animals can you place?

ASSOCIATION OF PHOTOGRAPHERS

Address: **81 Leonard Street, London EC2A 4QS**

Dates: **21 Sept - 28 Oct 2010**

Open: **Mon to Fri 10am to 6pm**

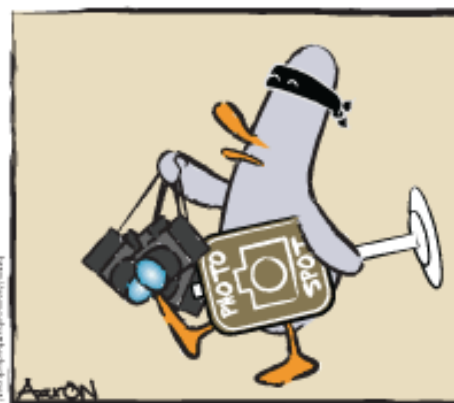
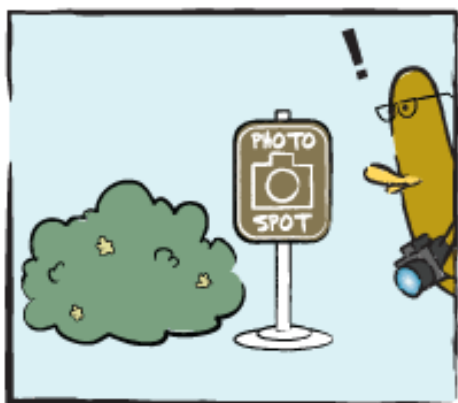
Cost: **Admission free**

Web: <http://gallery.the-aop.org>

AOP PHOTOGRAPHERS AWARDS

The AOP Photographers Awards is a celebration of exceptional work by the industry's elite. This year's exhibition (of 251 Images) showcases the best personal and commissioned images produced over the last eighteen months. The quality of the images reflects the growing creativity and diversity of the AOP membership.

What The Duck



Thanks for reading, and Happy snapping,

Steve

31st August 2010

ps Don't forget, this is YOUR News Update, and I welcome any contributions from members. Send me your: comments, idea's, articles, events, exhibition details, etc. Send all contributions to: tps@elms42.freemove.co.uk

The views expressed in this Newsletter are not necessarily those of Tandridge Photographic Society which takes no responsibility for statements made in any article in this newsletter or for any matter arising there from.



The Art of Photography: from Plate Camera to Computer
Robert Phillips Gallery, Riverhouse Barn, Walton on Thames, Surrey
Wednesday 6 - Sunday 24 October 2010
FREE ENTRY
Opening Hours: Wed - Sat 1100 to 1600; Sun 1430 - 1630

In a rare opportunity to see early prints from The Royal Photographic Society's Collection – ranging from 1845 to 1940 – this exhibition contrasts the work of the pioneers, including staging and multiple negatives to make composite prints, with outstanding work from today's RPS digital photographers who use their cameras and computers to develop exciting images and art. Consumer digital cameras and easy access to imaging software have led to greater awareness of the use of manipulation in everything from air-brushed models on magazine covers to celebrity and political set-ups. As this exhibition shows, the debate about truth and illusion in photography is far older. Entry to the Exhibition is FREE.

Two special events, which will be of particular interest to photographers, accompany the exhibition.

There will be a Private View on **Tuesday 12 October** from 1800 to 2000 - immediately followed by an illustrated talk by Peter Nicholls, a Times senior photographer, on his life in photo journalism. Tickets for this talk are £8 from the Box Office: telephone 01932 253354. After training in photography Peter Nicholls worked on local newspapers and a provincial news agency before moving to Fleet Street in the late 80s. He worked for the UK's first colour daily, *Today*, before joining the Times in 1995 where he is now a senior photographer. Covering a whole host of themes, his most recent work is born of the 'war on terror' and has taken him to Iraq and Afghanistan, where he has been embedded with British and US troops, as well as operating unilaterally. He has also travelled extensively in Africa and many other strife-torn parts of the world to cover famine, floods and conflict, including the middle-east.

Sunday 17 October will see a Digital Imaging study day with Steve Caplin, a digital artist who specializes in satirical photomontage illustration. His work is commissioned by newspapers and magazines around the world. Steve is the author of nine books, including the best-selling *How to Cheat in Photoshop* and the newly published *Art and Design in Photoshop*. The workshop runs from 1000 until 1600. Tickets are £25 (£15 students) which includes lunch. Telephone Box Office: 01932-253354

Don't miss this chance to see some of the rarest and greatest photographs the RPS has in its archives.

Riverhouse has plenty of FREE parking and a fully licensed café-bar serving light lunches during gallery opening hours. It is only 30 minutes by train from Waterloo.

Further information on 01932-254198 and www.riverhousebarn.co.uk



FILM NATIONAL
MEDIA MUSEUM
RADIO MUSEUM
WEB MUSEUM
PHOTOGRAPHY

SCIENCE & SOCIETY
PICTURE LIBRARY

