

TANDRIDGE PHOTOGRAPHIC SOCIETY

JANUARY 2008 NEWSLETTER

On Monday February 11th we have been invited to take part in the Epsom CC Invitation Challenge. The details can be found in the Out and About Section. Do try and get along to support TPS.

But first, John N has something he to get off his chest . . .

RECORD SHOTS

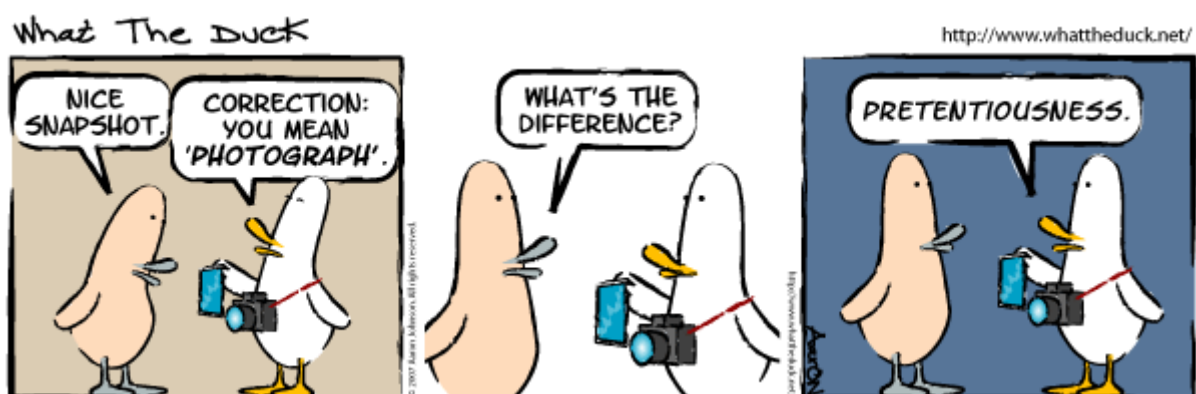
I recently watched a wonderful television programme about war photography; some people who were mentioned are world famous photographers. All their shots were records of what they saw - they varied - some were straightforward pictures of events - many were brilliantly composed to show what the photographer wanted, to make a point, often very harsh - but they were record shots.

The term 'record shot' is, unfortunately, used quite frequently in clubs, particularly by judges. You hear them say during a judging session "Well this is a record shot" or, even worse, "This is JUST a record shot". Either of these is the kiss of death, especially the second.

So what do they mean by this term? Judging from the way in which it is uttered, it sounds like a critical term, almost derogatory. I think it means that this is a shot they do not like, and would not have taken. As judges by and large want to be constructive and not unkind, they mistakenly use the term 'record shot' in order to avoid giving offence. The type of shot that gets this approbation is usually a straightforward shot of something. But the photographer chose that particular viewpoint, that lens, those lighting conditions, that aperture and shutter speed deliberately. The shot may not have been composed as the judge would like; if so, why not say that. Some people might take the view that a straightforward shot is more appealing than one taken from a strange angle, or to show patterns in the picture. Some people prefer artistic shots, some prefer other types; there is place for both. What matters is if the picture is sharp, well composed and well lit, and gives to the viewer the feeling or information that the photographer intended to give.

So I would be very pleased if that terrible term 'record shot' was forever consigned to the dustbin of history.

John Nathan LRPS
January 2008.



[SPA INTER CLUB COMPETITION 2008-9](#)

The draw for the 2008-9 Competition has now been done - TPS will be in league 8 and will have home matches with Guildford PS and Yateley CC, but will be away to Kingston CC.

[CHINESE WHISPERS II](#)

This did start in January, with 10 members in the chain. The images have been flying around, and Brian Smith will be putting the results on our website very soon.

[PHOTOGRAPHERS' GALLERY](#)

The Photographers' Gallery is to have a new home in the heart of Soho in 2010.

The new Gallery will have double the current exhibition space, provide state of the art technology for education, have a new on-line resource centre and a street level café and bar.

The £15.5 million new home for The Photographers Gallery, the UK's national centre for the promotion of photography, is to be built on a prime site in Soho. It is due to open in 2010 and will be designed by internationally acclaimed architects, O'Donnell + Tuomey, as their first major UK commission.

With around half a million visitors a year, The Photographers Gallery has outgrown its current facilities at 5 and 8 Great Newport Street, first opened at number 8, the site of a former Lyons Tea Bar, in 1971.

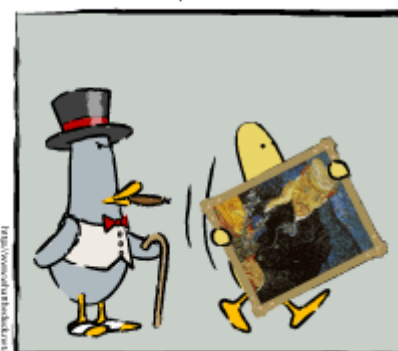
The new development will be located on a prime site in Ramillies Street, in the heart of Soho. Spread over six floors, the development will double the current exhibition space, provide state of the art technology for education, a new on-line resource centre and a street level café and bar, allowing the Gallery to play an expanded role in the cultural development of this vibrant part of London's West End.

Alongside New York's International Centre for Photography, Rotterdam's Nederlands Fotomuseum and La Maison Européenne de la Photographie in Paris, The Photographers' Gallery is one of the world's leading centres for the promotion of contemporary photography. It opened on 14 January 1971 with *The Concerned Photographer*, an exhibition curated by Cornell Capa, the American photo curator and younger brother of photographer Robert Capa. The Gallery has introduced the work of many leading photographers during its 36-year history including presenting the first UK solo shows of Juergen Teller, Robert Capa, Sebastião Salgado and Andreas Gursky. The £30,000 Deutsche Börse International Photography Prize is hosted and produced annually by The Photographers Gallery.

What The Duck



<http://www.whattheduck.net/>



KEVIN'S NEW STUDIO

Kevin Black, of County Border News fame, has recently acquired a studio in Lingfield.

He has sent us this invitation:

'Later this year I am planning to bring a leading glamour model to my studio in Lingfield for local photographers to come along and take photos of her. At this stage I need to know if the photographers of the society would be interested in participating in the 6-hour shoot with Michelle. Naturally there will be a cost to your members. Let me know if there is an interest from the society in working with her - she is a very professional glam model by the way.'

. . . we don't know the cost yet – but if you might be interested let Marie-Ange know.



LITHIUM BATTERIES

Effective from January 1st 2008, The US Department of Transportation brought in new safety rules relating to the storage of rechargeable Lithium batteries when **flying to, from and within the USA.**

The new restrictions are complex and the US DOT has issued a few updates to 'clarify' the rules! **Do check the latest info at:** <http://safetravel.dot.gov>

The rules are:

- **Spare batteries** are the batteries you carry separately from the devices they power. When batteries are installed in a device, they are not considered **spare batteries**.
- **You may not** pack a spare lithium battery in your **checked baggage**
- **You may** bring spare lithium batteries with you **in carry-on baggage** – see our spare battery [tips](#) and how-to sections to find out how to pack spare batteries safely!
- Even though we recommend carrying your devices with you in carry-on baggage as well, if you must bring one in checked baggage, you **may** check it with the batteries installed.

The following **quantity limits** apply to **both** your spare and installed batteries. The limits are expressed in grams of "equivalent lithium content." 8 grams of equivalent lithium content is approximately 100 watt-hours. 25 grams is approximately 300 watt-hours:

- Under the new rules, you can bring batteries with up to 8-gram equivalent lithium content. All lithium ion batteries in cell phones are below 8 gram equivalent lithium content. Nearly all laptop computers also are below this quantity threshold.
- You can also bring up to two spare batteries with an aggregate equivalent lithium content of up to 25 grams, in addition to any batteries that fall below the 8-gram threshold. Examples of

two types of lithium ion batteries with equivalent lithium content over 8 grams but below 25 are shown below.

- For a lithium metal battery, whether installed in a device or carried as a spare, the limit on lithium content is 2 grams of lithium metal per battery.
- Almost all consumer-type lithium metal batteries are below 2 grams of lithium metal. But if you are unsure, contact the manufacturer!

GUIDE TO RULES EFFECTIVE JANUARY 1, 2008		
Type Of Battery/Batteries	In Checked Baggage	In Carry-On Baggage:
Lithium Metal Battery, Installed in a Device (up to 2 grams lithium)	Permitted ¹	Recommended ¹
Spare Lithium Metal Battery (Not Installed In a Device) (up to 2 grams lithium) (up to 2 grams lithium)	Forbidden	Permitted in carry-on baggage ²
Lithium Metal Battery, Spare or Installed (over 2 grams lithium)	Forbidden	Forbidden
Lithium-Ion Battery Installed in a Device (up to 8 grams lithium equivalent content)	Permitted ¹	Recommended ¹
Spare Lithium-Ion Battery (Not Installed in a Device) (up to 8 grams lithium equivalent content)	Forbidden	Permitted in carry-on baggage ²
"Special Case" Up to 2 Lithium-Ion Batteries, Spare or Installed (between 8 and 25 grams aggregate lithium equivalent content)	Spare Batteries: Forbidden! Installed in Devices: Permitted ¹	Spare Batteries: Permitted ² Installed in Devices: Permitted ¹

1. Although you may carry some devices and installed batteries in checked baggage, carrying them in carry-on baggage, when practicable, is preferred. In checked baggage, ensure that devices remain switched off, either by built-in switch/trigger locks, by taping the activation switch in the "off" position, or by other appropriate measures.

2. Be sure to take protective measures to prevent against short-circuits. See our spare battery [tips](#) and how-to pages.

OUT AND ABOUT

FSLPS Audio-Visual Digital Competition 2008

A reminder the Fifteenth Federation of South London Photographic Societies A-V Competition is being held at All Saints Church Hall, Onslow Gardens, Sanderstead, Surrey CR2 9AB on **Saturday 26th January 2008** at 4.30pm to about 9.30pm. Doors will open at 4 pm. Admission costs £5 and will include a programme and refreshments.

Epsom Camera Club Invitation Challenge

The Epsom CC Inter Club Invitation Challenge will be on **Monday 11 February**. The clubs invited to take part this year are Beckenham PS, Chichester CC, Tandridge PS and Woking PS and the judge is Mike Chambers ARPS EFIAP MPAGB.

Each club will have a panel of 5 prints and 5 projected digital images that have not been used in an external competition before. No member may have more than one print and one projected image in the panel.

The competition will be held at: the Longmead Day Centre, Sefton Road, Epsom KT19 9HG. See: <http://tinyurl.com/ypsn6w> for directions.

Please can you arrive on the night at about **7.45pm** for an 8pm start.

SPA Inter-Club Competition 2007-8

Our Quarter Final Match will be held at Cheam CC on **Wednesday 12th March 2008** when the judge will be Colin Westgate FRPS MFIAP APAGB.

Cheam CC meet at:

David Tweddle Hall, St Andrews Church, Northey Ave., Cheam SM2 7HF.

Tripartite Competition

The Tripartite Competition will be held at 8pm on **Friday 4th April** at **Selsdon C.C.**, who meet at: The Guide Hut, Rear of St John's Church, Upper Selsdon Road, Selsdon.

EXHIBITIONS:

Fairfield Gallery Corridor, Fairfield Halls, Croydon

RPS Colour Group 2008 Exhibition.

Monday 7th January to Saturday 2nd February 2008.

Open during normal Fairfield opening times.

Photographer's Gallery, London

Insomnia by Antoine d'Agata

Ends January 27th 2008

www.photonet.org.uk

National Portrait Gallery, London

Photographic portrait prize 2007

Ends February 12th 2008

www.npg.org.uk

Michael Hoppen Gallery, London

Vanishing Africa by Mirella Ricciardi

February 21st – April 5th 2008

www.michaelhoppengallery.com

Natural History Museum, London

Shell Wildlife Photographer of the Year.

Ends 27th April 2008

www.nhm.ac.uk

Hoopers Gallery, London, England

Children of the sun by Nurit Yardeni

March 10th -15th

www.hoopersgallery.co.uk

Other Events:

Focus on Imaging, NEC Convention Centre, Birmingham, England.

February 24th - 27th 2008.

www.focus-on-imaging.co.uk

HINTS & TIPS

PhotoBert Sale

Special 20% Discount on ALL PhotoBert CheatSheets thru February 15th!
Purchase for yourself or for others - feel free to pass this along to friends. Just enter the Discount Code Winter20 on our checkout page and you'll receive a 20% discount on your total order.

PhotoBert now have 90 different CheatSheets! Here are a few of the newest CheatSheets:

Nikon D300 Digital SLR
Nikon D3 Digital SLR
Canon EOS 1DS M III
Canon EOS 1D M III
Canon EOS 40D
Canon 580EX II Speedlight
Canon Powershot G9 Camera

PhotoBert Digital PhotoCourse on a Card (new & completely revamped, the popular PhotoCourse on a Card CheatSheet. It's now in full-color, printed on 17" x 11" stock and folded into 3 sections so the folded size is only 6" x 11". It contains the "basics" you need to understand to move ahead with digital photography. Some of the included topics include:

- * Why your pictures don't come out the way you saw them;
- * Exposure Basics: ISO, Apertures & Shutter Speeds;
- * Getting the RIGHT exposure with your camera's different exposure modes (Programmed, Aperture Priority/Value, Shutter Priority/Time Value & Manual);
- * What fools your camera and causes bad exposures (ever get a washed-out sky or sunset?) and how to get it right;
- * Exposure Equivalencies and why they're important;
- * What your camera can see and what it can't;
- * Lens focal lengths - zoom and prime lenses - and how your digital camera affects how your lens sees;
- * Why your pictures may not be coming out as sharp as they should be and how to adjust;
- * Depth of Field and Hyperfocal distance explained;
- * RAW images vs. JPEG - the advantages of each explained;
- * White Balance - what it is and when it is and isn't important;
- * Flash Photography - how far can your flash reach, bounce flash and the common flash modes explained (TTL, Slow Sync, Red-eye reduction, & Rear Curtain)



Thanks for reading, and Happy snapping,

Steve

22nd January 2008

ps Don't forget, this is YOUR News Update, and I welcome any contributions from members. Send me your: comments, idea's, articles, events, exhibition details, etc. Send all contributions to: tps@elms42.freemove.co.uk